

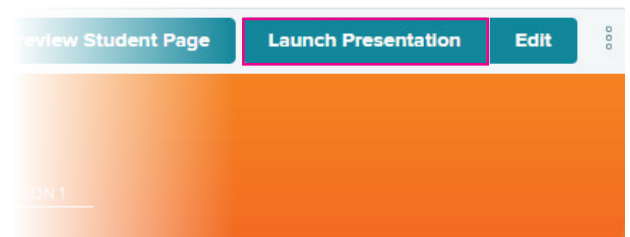
CREATE CUSTOMIZED TEACHER PRESENTATIONS

Teacher presentations are pre-built for you and can be easily customized. With the *IMPACT* Online presentation player, you can choose what learning resources to display, what order to put them in, and how to talk about them with your classes. The customizable teacher presentations enables you to build a solution that works for you and your students.

HOW TO START A PRESENTATION

From the top of the chapter or lesson landing page, simply click on **Launch Presentation** button to start your presentation.

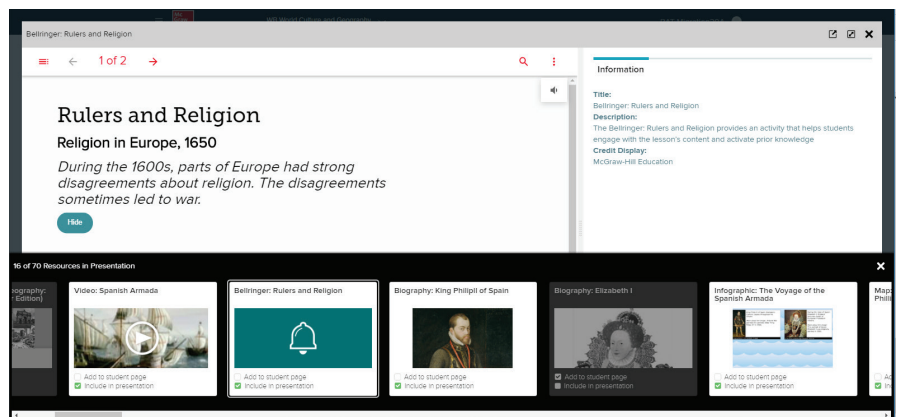
NOTE: There is a default presentation that you can use –OR– you can customize your own presentation.



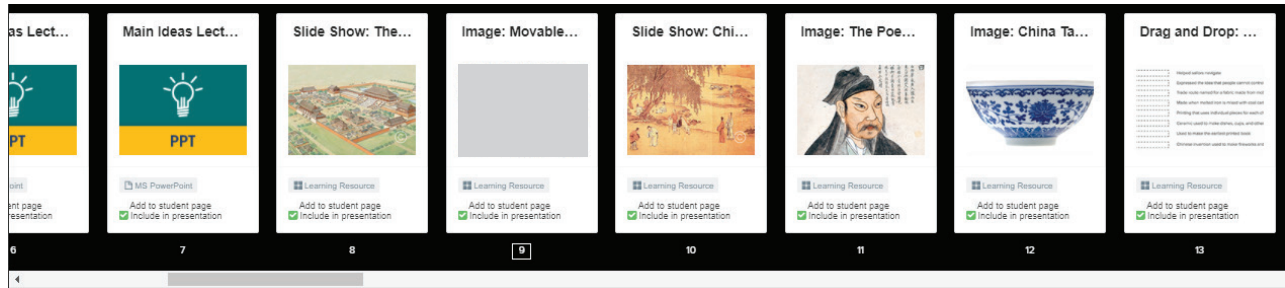
✔ You have successfully found and opened the *IMPACT* Online Presentation Player!

HOW TO CUSTOMIZE A PRESENTATION

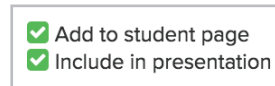
You can customize your presentation from the player itself. Click on the **Edit** button on the top of the lesson or chapter landing page to preview a carousel of the resources included in the lesson presentation.



- Notice the variety of resource types, including videos, images, interactive graphic organizers, and more!
- To reorder a resource: simply drag and drop the item to a new position in the presentation.



- To remove a resource: Uncheck the “Include in presentation” box on the resource tile.

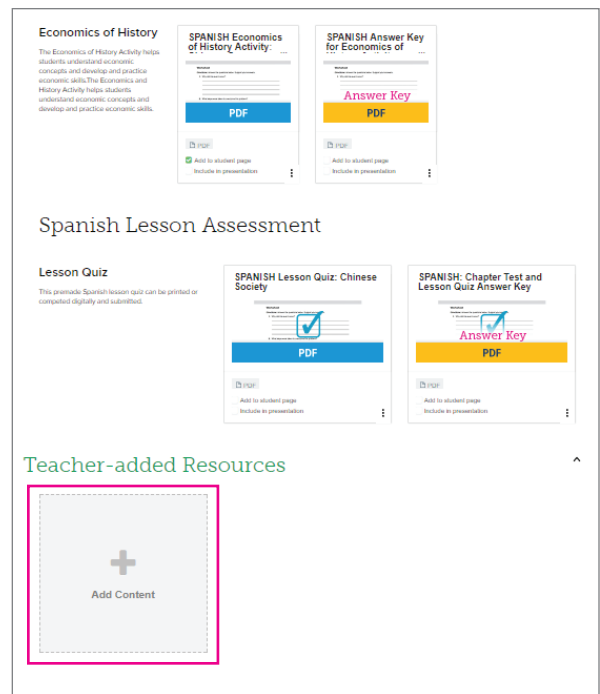


Have your own resources to include in the presentation? Add them!

Close out of the presentation player. Then, scroll down the lesson planning page to locate the **Teacher-added Resources** tile. Upload your favorite resources!

Once uploaded, the resource will automatically appear in the presentation carousel, and you can include it in your presentation.

- ✓ You have successfully customized a presentation in *IMPACT* Online!



ADD YOUR NOTES HERE:

EXPLORING YOUR GRADEBOOK

The Gradebook features are designed to give you easy access to student results and include a variety of views into student work in order to allow you to target instruction or assessment where needed.

LAUNCHING GRADEBOOK

Expand the Main Menu and select **Gradebook**.

OVERVIEW

World History and Culture - Gradebook

Student	ID	Total Grade	Intro Assignment 08/09/2018	Lesson 1 Project 08/09/2018
Average		87 % B	86%	88%
Adams, John		95% A	100 %	90 %
Breeze, Lola		90% A	80 %	100 %
brintzenhoff, Will		75% C	70 %	80 %
Drewyor, Bradley		75% C	80 %	70 %
Smitt, Herman		100% A	100 %	100 %

5 Students

Legend

1. Students are listed in alphabetical order by last name.
2. Their overall class grade presents next to their name.
3. Click on an assignment title to see the scores for that assignment or to finish grading an assignment.

NOTE: You are in the Assignments tab now. To go back to Gradebook, hit your browser’s “Back” button, or select Gradebook.

STUDENT GROUPS

You may also view student work by grouping. You may organize students into groups of your choosing, and revise as needed throughout the year. To view work by group, select the **Group** button, and then the group you'd like to see.

The screenshot shows a 'Student Groups' interface. At the top, there is a yellow header with 'Student Groups' and a close button. Below this is a table with columns for 'Student ID', 'Total Grade', and three assignment categories: 'Guide ... Empire 07/31/2018', 'Video: ... Rome 07/31/2018', and 'A Trou ... Em 07/31/2018'. The table includes an 'Average' row showing '92 % A' and three student rows: 'Boettcher, Lyndsay' (94% A), 'brintzenhoff, Will' (100% A), and 'Drewyor, Bradley' (83% B). Each student row has 'Add' and 'PD' buttons. To the right is a 'Filters' sidebar with a close button. It contains 'Student Filters' with options to filter by 'With Total Grade' (set to 'Below 70 %') and 'Show only Student Groups' (set to 'All selected (1)'). A dropdown menu is open under 'Show only Student Groups', showing 'Select All' and 'Blue Birds' as options. There is also a 'Show Categories' section with 'Assignments' checked. An 'Apply' button is at the bottom of the sidebar.

Student ID	Total Grade	Guide ... Empire 07/31/2018	Video: ... Rome 07/31/2018	A Trou ... Em 07/31/2018
Average	92 % A	0%	0%	0%
Boettcher, Lyndsay	94% A	Add PD	Add	-
brintzenhoff, Will	100% A	N/A PD	Add	Add Score
Drewyor, Bradley	83% B	Add PD	Add	-

ADD YOUR NOTES HERE:
